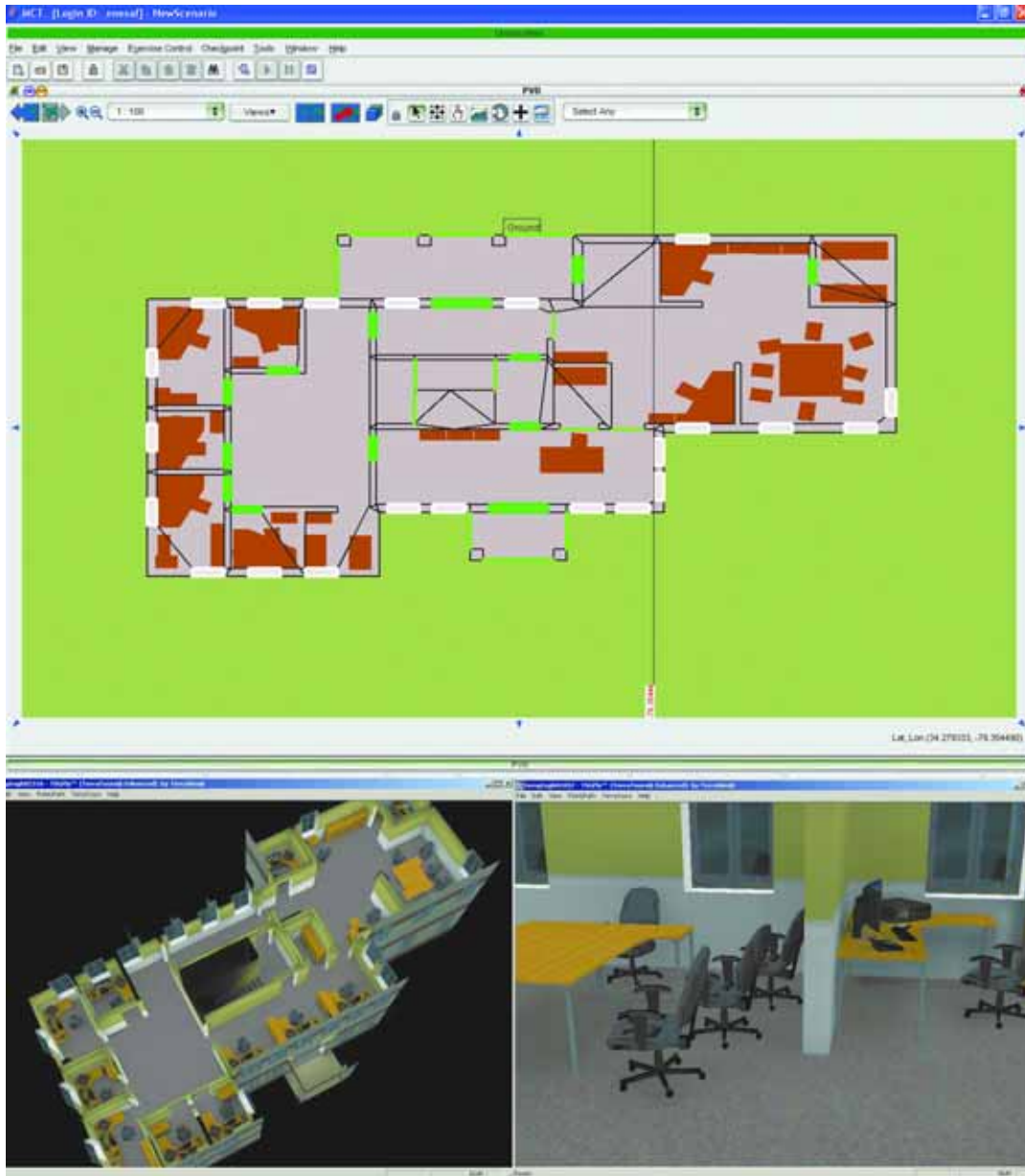


# Improved UHRB Support in TerraTools®



TerraSim, Inc. has added several new capabilities for TerraTools® users for the production of OneSAF Terrain Format (OTF) databases, particularly with detailed urban content.

Furniture models can now be interactively or automatically placed within UHRB building interiors, allowing for the production of correlated visual and constructive representations.

The figure to the left shows an office building with furniture consisting of desks, chairs, computer monitors, and bookcases represented in the OneSAF 2.1 MCT and as an OpenFlight model. Settings on the UHRB components can include lighting characterization, window and door type, and construction and aperture state. Furniture objects are described by their type (desk, chair, table) and materials.

In order to better support OneSAF users who are developing complex UHRBs, TerraSim has developed a TerraTools processing node that checks validity of a set of UHRB .xml files. This processing node allows users to identify and correct potential problems prior to database construction or UHRB placement, saving time and effort. The validation tool is designed to work with UHRBs produced by the TerraTools building interior generator, the ARA U2MG building generator, and other third party UHRB construction tools.

## About TerraSim

TerraSim is a US owned high-technology company that provides software solutions and services for advanced visual simulation and database construction using a variety of geospatial source data. TerraTools®, their primary product, is available for Windows 2000, XP, and Vista.

TerraTools is used in the automated construction of dense urban environments for operations planning and situation assessment as well as to produce exercise databases covering hundreds of one degree geocells. TerraSim also provides database construction services and advanced technology development for both civilian and military customers.

TerraSim's TerraTours® product supports highly interactive geospatial query using 3D visualizations linked to a variety of collateral source data. Using GISLink™ technology, TerraTours users can automatically georeference and display information sources such as still photography, video streams, CAD design data, maps, and any web-enabled document.



For more information, visit [www.terrasim.com](http://www.terrasim.com).