

TSGFly

High Performance
Real-time
3D Viewer



TSGFly - Performance Optimized for Large Area and Complex Urban Visualizations

TSGFly™ is an **advanced 3D viewer** for Tiled Scene Graph (TSG) databases generated by TerraTools®, TerraSim's state of the art geospatial visualization software. The TSGFly viewer provides a **real-time viewing environment** for inspecting and demonstrating visualizations created in TerraTools.

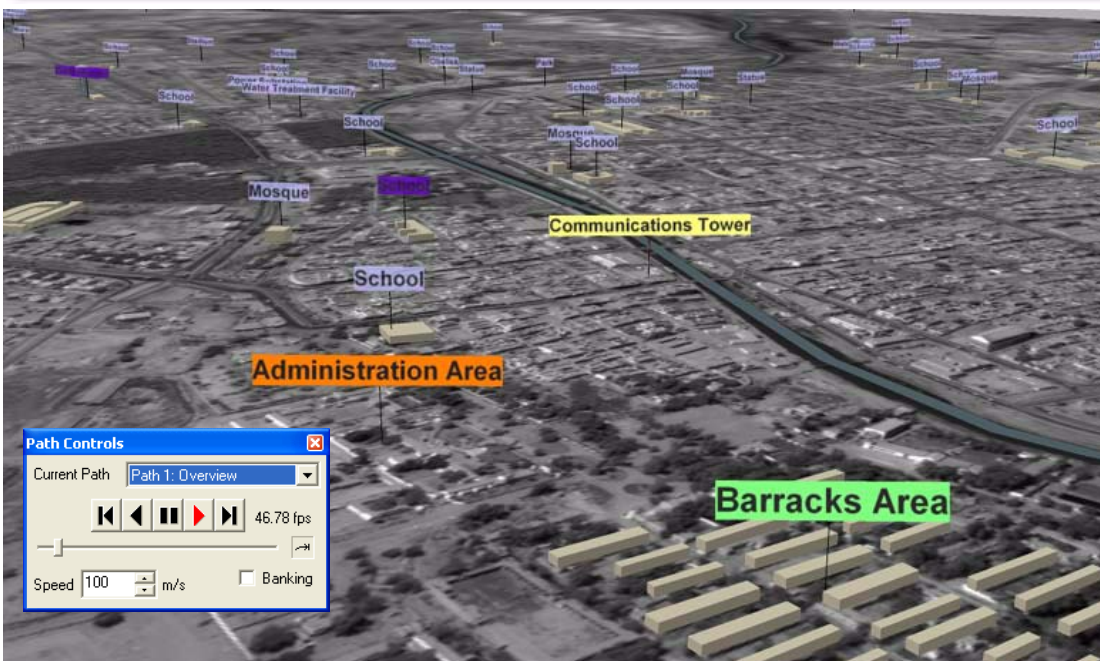
TSGFly is **freely distributable**, allowing database developers to easily deliver their TerraTools visualizations to their clients and customers. Navigation controls are quick and easy to learn with advanced capabilities available for experienced users.

TerraTools divides its visualizations into multiple data tiles that

TSGFly **efficiently pages** into the necessary viewing area, providing **high-performance** 3D visualizations **without expensive graphics hardware** under Windows 2000 and XP.

The basic movement controls in TSGFly allow the viewer to freely navigate the visualization in real-time. TSGFly also has many capabilities that simplify the navigation process. **Points** of interest and **flight paths** can be dynamically created and modified within the TSGFly viewer. Exact coordinate locations can be selected and viewed in several different **coordinate systems**. Together, these controls combine to allow **easy and flexible navigation** for all users.

TSGFly - Real-time Database Navigation



- Flight and drive modes
- Compass heading display
- Map overlay shows position
- Specific interest points saved for display and distribution
- Label important points
- Create and play back paths
- Observe surrounding area
- Camera zoom and sizing
- Navigation controls for all user experience levels

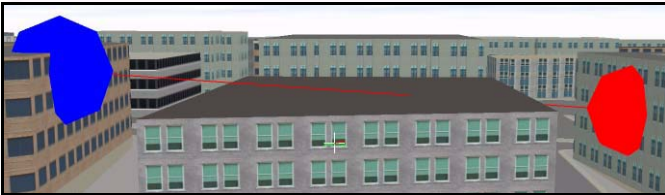
TERRASIM



TSGFly - Customizable Scene Information, Display and Environment

- Custom Point Labels for objects of interest
- Position Controls display in multiple coordinate systems
- Target Information on objects for feature identification
- Environment Settings (sky, time of day, visibility)
- Interactive control of Level of Detail and tile paging
- Flexible camera geometry and zoom settings

TSGFly - Embedded Tools for Urban Modeling and Analysis



Intervisibility tool to analyze line of sight



Flood plane shows increasing water levels



X-Ray to interactively display interior surfaces



Quantitative display of aerosol dispersal range

Benefits of the TSGFly 3D Viewer

TSGFly provides our customers with a freely-distributable, fully-functioned, real-time database viewer that can be used for data-base inspection or customized and delivered as a component of your end-user system solution. Delivered presentations can include pre-planned paths and points of interest, while allowing users to inspect and analyze the given scene.

About TerraSim:

TerraSim is a high-technology company that provides software solutions and services for advanced geospatial visualization of complex environments utilizing imagery, GIS, and CAD design data. TerraTools® is the complete synthetic environment toolkit, used in the automated construction of dense urban environments for regional planning as well as large area simulation visualizations for military exercises. For more information on our TerraSim's products and database construction services, please contact us at:



One Gateway Center, Suite 2050
420 Fort Duquesne Blvd.
Pittsburgh, PA 15222

(412) 232-3646
(412) 232-3649 FAX
www.terrasim.com

Copyright© 2000 - 2004, TerraSim, Inc. All rights reserved. TerraSim and TerraTools are registered trademarks of TerraSim, Inc. All other product names and/or logos are trademarks of their respective owners.